

## INSTRUMENTS // TOUCH PANEL I18

# ADVANCED SEAL AND TOUCH TECHNOLOGY

The Touch Panel i18 is an operator panel with touch function. It will endure the extreme environments within the food and beverage industries and is in general very useful in harsh environments.

This high performance Touch Screen Computer is IP69K certified and will therefore withstand high temperature (80°C) washdown as well as high pressure (103 bar) cleaning. The Touch Panel i18 can be cleaned with all typical cleaning agents.

### Hygienic and robust

The Touch Panel i18 is designed in compliance with the EN1672-2 guidelines for hygienic design as it has no sharp edges, grooves or joints. The all stainless steel enclosure, the 6 mm (0.24") thick vandal and scratch resistant front, the blue silicone gasket, as well as the Roxtec™ cable glands ensure that it is able to withstand virtually anything.

It does not require special care in your cleaning instructions. The cable glands can either be mounted for individual cables (see last page option A) or for conduit (see last page option B).

The touch panel is extremely robust and durable but should an accident occur, any component may easily be replaced, including the touch screen.

If needed, an extra clear protection front foil can be added to the Touch Panel i18 as an option – mounting or replacement does not require the panel to be opened.



## Value for you!

- IP69K - clean it from any angle at 80°C and 103 bar pressure
- In compliance with EN 1672-2 hygienic guidelines
- All-in-One - no extras!
- Use it as an embedded computer or monitor
- Easy installation - simply pull your standard cables or conduit through the gland
- Food safe - made of food grade materials
- Chemical resistant - the stainless-steel cabinet will withstand virtually any cleaning agents



Waterproof



High temp.



Dustproof



Durable



IP69K

### All-in-One

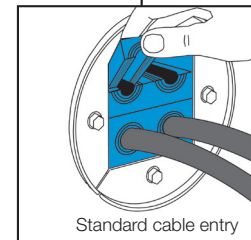
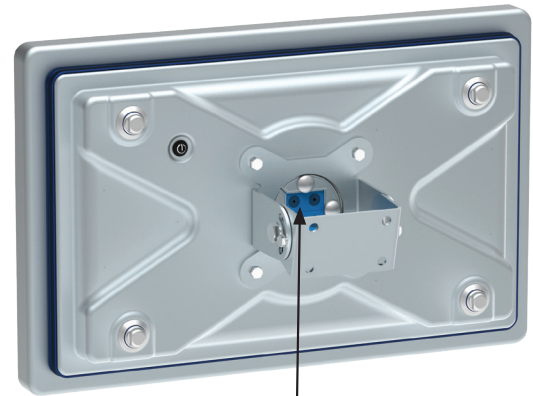
The Touch Panel i18 is a true all-in-one unit. There is no need for a separate power supply or other equipment. The Touch Panel i18 can be ordered as a stand-alone PC or as a monitor (see last page for details). Pre-installed operating systems are optional - please contact Frontmatec for more details.

### Higher precision and no calibration

In order to obtain a more precise touch function, the LED panel is bonded to the touch sensor thereby reducing the parallax error. Further, the touch panel can be used for gloved operation and the projected capacitive touch does not need to be calibrated, even if replaced.

### Reduced complexity

24V output and 4 COM ports reduce the complexity when interfacing to legacy equipment, like barcode readers, pH meters etc.



		PC	Monitor
<b>CPU</b>	Type	N4200	-
	Clockspeed	1.1 GHz (2.5 GHz turbo speed)	-
	Cores	4	-
<b>Memory</b>		8 Gb	-
<b>Storage</b>		128 GB SSD	-
<b>Display</b>	Type	LED	
	Size	18.5"	
	Resolution	1920x1080 px	
<b>Touch</b>	Type	10-point projected capacitive multi touch (PCT)	
	Thickness	6 mm	
	Front foil	Optional	
<b>Interfaces</b>	Ethernet*	2x1 Gb/s	-
	Serial ports	4xRS-232	-
	USB	2xUSB	-
	VGA	-	Optional
	DVI	-	Optional
	HDMI	-	1
<b>Power supply</b>	Supply voltage	100-240VAC (24VDC optional)	
	Power consumption	TBD	
<b>Cable entry</b>	Cables	4 (6 optional)	
<b>Environmental</b>	Ingress protection	IP69K	
	Operating temperature	0-45°C (32-113°F) 80°C/30 sec. (176°F/30 sec.)	
<b>Dimensions</b>	HxWxD	32.1 x 50.0 x 9.4 cm (12.6"x19.7"x3.7")	
	Weight	11.2 kg	

\*Dedicated Ethernet interconnect up to 100 m

## CONTACT

**CN:** shanghai@frontmatec.com  
+86 215 859 4850

**DK:** smoerum@frontmatec.com  
+45 445 037 00

**PL:** grodzisk@frontmatec.com  
+48 22 734 55 51

**US:** kansascity@frontmatec.com  
+1 816 891 2440

**DE:** beckum@frontmatec.com  
+49 252 185 070

**ES:** barcelona@frontmatec.com  
+34 932 643 800

**UK:** birmingham@frontmatec.com  
+44 121 313 3564